

# RSD

Universal serial data recorder



Data recording from RS232 in internal memory with a capacity of 16 GB

Downloading data to PC via Ethernet, RS 232, USB

Power supply 12-24 VDC

PC software for configuration

Housing made of aluminum



# RSD

Designed to work in industry

# RSD - UNIVERSAL SERIAL DATA RECORDER

RSD is a modern, self-contained, ready-to-run simple electronic device for recording any type of data sent from RS 232 serial port. Receiving single data frame at a time is signaled by a brief flash of led diode or through steering solid state relay - with timely programmed response set earlier in configuration. Saved data frames can be quickly transmitted to dongle or PC. The encoded results can be comfortably viewed thanks to enclosed configuration software.

## ✓ Main functions of the RSD recorder

- Recording of data incoming to the RS232 port
- Recording of data frames upon activation of the digital input in RSD
- Recording of data frames within defined time intervals
- Possibility to send frames (requests) to the RS232 port within defined time intervals or upon activation of the digital input
- Possibility to control external diode or a digital output

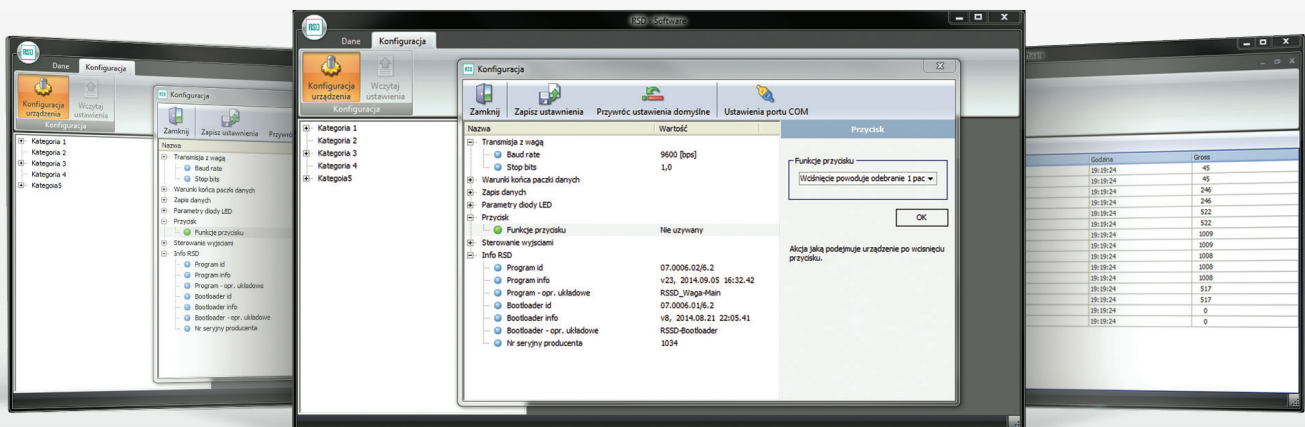
## DEDICATED SOFTWARE

The computer software is delivered along with the recorder. The software allows to configure the recorder, read, export and display recorded data. It includes a graphics editor, by means of which the user can define the location of data in question on the incoming transmission frame. Owing to that, retrieving information, being a smaller part of a whole recorded transmission, can be easy.

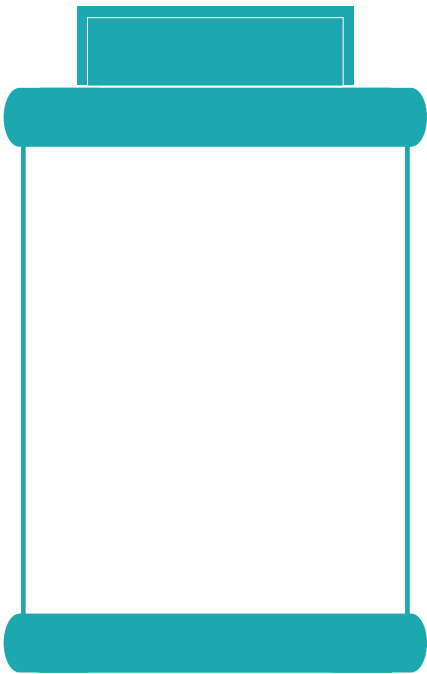
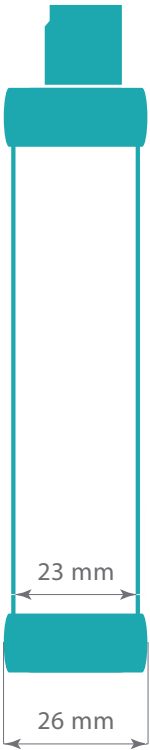
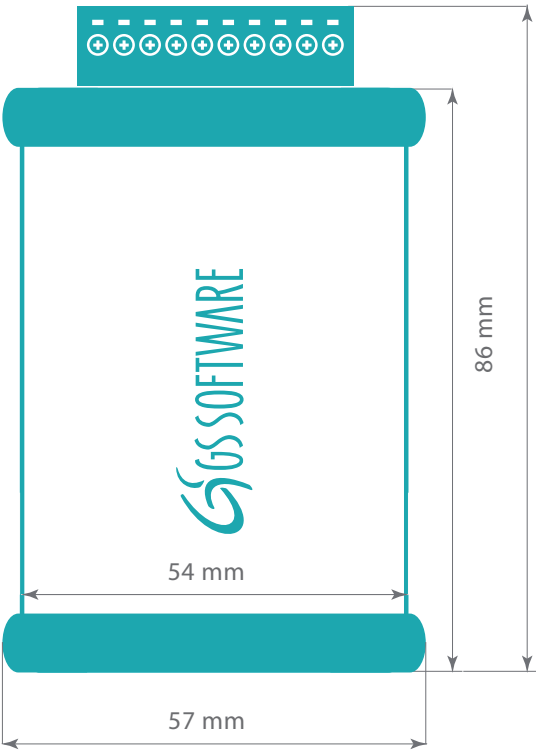
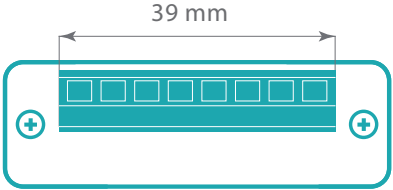
By means of the RSD software, the user can:



- Read recorded data (upon their prior saving on the USB key)
- Transfer of recorded data to PC via TCP / IP, RS 232
- Analyse data gathered in the memory of the RSD device
- Retrieve data from transmission frames recorded in the RSD memory
- Export data to the csv, txt formats
- Easy configuration



# RSD DIMENSIONS



# TECHNICAL SPECIFICATION

CATEGORY	PARAMETER
<b>USB</b>	
Accordance	USB 1.0/1.1
Compatibility	USB 2.0, 3.0
Connector	USB, type A – port
File format	FAT 32
<b>Digital inputs / outputs</b>	
Number of digital inputs	1
Type of digital input	Voltage free
Number of digital outputs	2
<b>COMMUNICATION INTERFACE TO THE DEVICE</b>	
Interface type	RS-232 (only line RX, TX, GND) Possibility of RX line operation in TTL mode
Connection type	Screw terminal connector
Transmission rate	1200 bps to 115200 bps
Stop bit	1,2
<b>COMMUNICATION INTERFACE TO PC (download of saved data)</b>	
Interface type	RS-232 (only line RX, TX, GND)
Interface type (*option)	Ethernet
<b>CHARACTERISTICS</b>	
Power supply	12~24 VDC (max 300mA)
Memory capacity	16 GB
The minimum time between recorded frames	50 ms
Weight	40 g
Dimension (in housing)	86x57x26 mm
Housing material	Anodized aluminum
IP rate	IP 40
Working temperature	From - 20 to 50 C

<b>ORDERING INFORMATION</b>	
PRODUCT	ORDERING KEY
RSD (RS-232)	HDW-RSD
RSD (RS-232 + Ethernet)	HDW-RSD-ETH
Housing	HDW-RSD-BOX

\* The manufacturer reserves itself the right to amend product features. Product parameters may be amended without any prior notice.  
GS Software Sp. z o.o., ul. Ogięczyzna 20, 31-589 Kraków, Poland. More to be found at [www.gs-software.pl](http://www.gs-software.pl)