

## Single-Phase Switching Power Supply 120-230 Vac, 15 W Output Power XCSD1015W

- Single-phase input 85...264 Vac / DC 100...370 Vdc
- Short circuit, overload, over temperature, input / output overvoltage protections
- Isolation Class 2, no grounding needed
- Compact dimensions
- Suitable for applications in SELV and PELV circuits



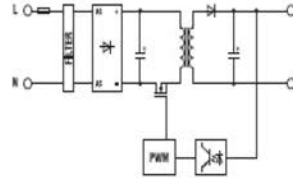
35x62xH90

### NOTES

The depth dimension includes the DIN rail clamp.

- (1) With 85...100 Vdc input, constant power, the output current shall be reduced by 30%
- (2) Please apply a derating factor of -0.015 A/°C (24Vdc version) or -0.03 A/°C (12Vdc version) for temperature above 55°C
- (3) The value of the supplied current also depends upon the line resistance

### BLOCK DIAGRAM



### VERSIONS

Output 24 Vdc  
Output 12 Vdc

Cod. XCSD1015W024VAA

Cod. XCSD1015W012VAA

CSD1015W024VAA

CSD1015W012VAA

### INPUT TECHNICAL DATA

Input rated voltage	120-230 Vac (range 85...264 Vac / 100...370 Vdc) (1)	
Frequency	47...63 Hz	
Current @ nominal Iout (Uin 120 / 230 Vac)	0.3 A / 0.12 A ± 10%	
Inrush peak current	< 5 A	
Power factor	> 0.6	
Internal protection fuse	T 1 A replaceable	
External protection on AC line	circuit breaker: 2 A - C characteristic - fuse: T 2 A	

### OUTPUT TECHNICAL DATA

Output rated voltage	24 Vdc	12 Vdc
Output adjustable range	—	—
Continuous current	0.6 A @ 55°C (2)	1.2 A @ 55°C (2)
Overload limit	>0.81 A (3)	>1.6 A (3)
Short circuit peak current	—	—
Load regulation	< 1%	< 1%
Ripple @ nominal ratings	≤ 50 mVpp	≤ 50 mVpp
Hold up time @ In (Uin 120 / 230 Vac)	>12 ms / >20 ms	>12 ms / >20 ms
Overload / short circuit protections	hiccup at the overload limit with auto reset / over temperature protection	
Status signals	"DC OK" green LED	
Uout threshold for alarm contact	—	—
Parallel connection	possible	possible
Redundant parallel connection	possible with external ORing diode	possible with external ORing diode

### GENERAL TECHNICAL DATA

Efficiency (Uin 120 / 230 Vac)	>86% / >86%	>84% / >85%
Dissipated power (Uin 120 / 230 Vac)	2,2 W / 2,2 W	2,7 W / 2,6 W
Operating temperature range	-20...+60°C, with derating over 55°C / thermal protection (2)	
Input / output isolation	3 kVAc / 60 s - SELV output	
Input / ground isolation	class 2 without PE connection	
Output / ground isolation	class 2 without PE connection	
Standard / approvals	IEC950, EN60950, UL508, UL60950	
EMC Standards	EN61000-6-2, EN61000-6-3	
Overvoltage category / Pollution degree	II / 2	
Protection degree	IP 20	
Connection terminal	2.5 mm <sup>2</sup> , screw type fixed (24-12 AWG)	
Housing material	UL94V-0 plastic material	
Approx. weight	130 g	
Mounting information	vertical on rail, allow 10 mm spacing between adjacent components	

### MOUNTING ACCESSORIES

Mounting rail type according to IEC60715/TH35-7.5

PR/3/AC, PR/3/AC/ZB, PR/3/AS, PR/3/AS/ZB