

## Product Specifications

### Material

Insulator	LCP (Liquid Crystal Polymer) UL94-V0
Signal Contacts	Male : Copper alloy / Ni + Au 0.20µm to 0.40µm max. Female : Copper zinc alloy / Ni + Au 0.20µm to 0.40µm max.
Fixing Hardware	LCP (Liquid Crystal Polymer) UL94-V0

### Electrical Features

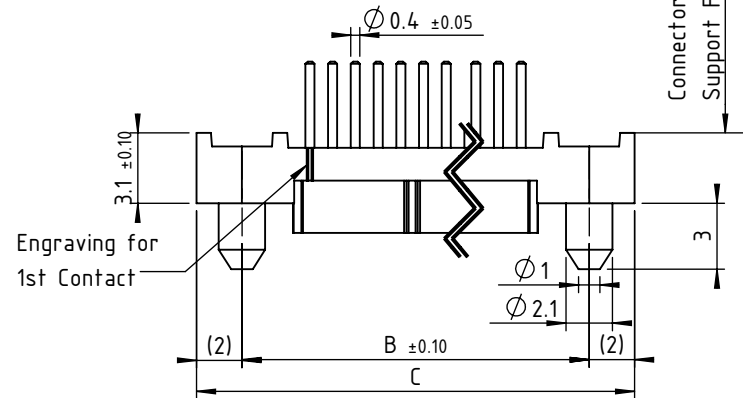
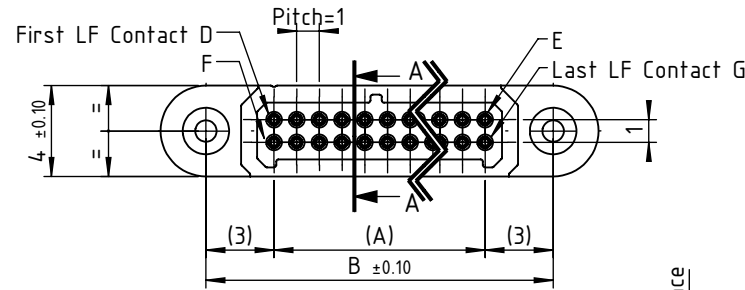
Current rating	UP to 4.8A @ 25°C (PCB to cable 20 pins) Up to 2.5A @ 25°C (PCB to PCB 20 pins)
Voltage	Voltage proof @ sea level: 1000V RMS Withstanding voltage @ sea level: 600V RMS
Contact resistance	10mΩ (initial)
Insulation resistance	> 2GΩ (after conditioning)

### Mechanical Features

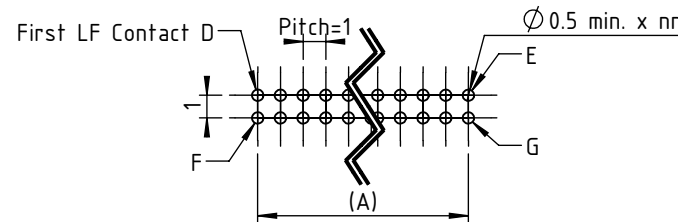
Contact durability	1000 cycles
Contact force	Engagement: 0.7N max Separation: 0.06N min
Contact retention	> 6N
Fixing hardware torque	Screw-Lok: 16cN.m

### Environmental Features

Temperature cycling	-65°C to +200°C
Humidity	25°C - 65°C / 89% - 94% humidity / 6 days
Vibration	Sinusoidal vibration: 15g / 10Hz - 2000Hz - 10Hz in 20min / 4h per axis in each 3 axes (total 12h)
Shock	Peak acceleration: 100g/Normal Duration 6ms; Wave form: sawtooth



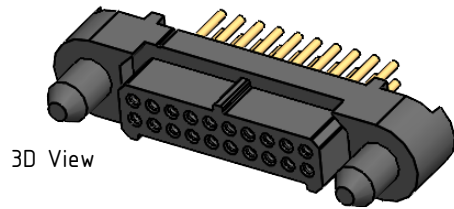
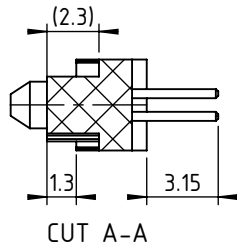
### Recommended PCB Layout



- NOTE:
1. Tape and Reel packaging
  2. ♦ Configurations are available in stock
  3. "Feel free to ask for technical support"



b	22/06/20	P.K	K.H	A.DL
Ind	Date	Drawn	Checked	Approved
Item :	Connector AMM 220 female straight on PCB, nn LF Contacts, R			



No. Of Contacts	Distance Between axes		Length in mm	LF Contact Reference			
nn	A	B	C	D	E	F	G
4	1	7	11	1	2	3	4
6 ♦	2	8	12	1	3	4	6
8	3	9	13	1	4	5	8
10 ♦	4	10	14	1	5	6	10
12	5	11	15	1	6	7	12
14	6	12	16	1	7	8	14
16	7	13	17	1	8	9	16
18	8	14	18	1	9	10	18
20 ♦	9	15	19	1	10	11	20
22	10	16	20	1	11	12	22
24	11	17	21	1	12	13	24
26	12	18	22	1	13	14	26
28	13	19	23	1	14	15	28
30	14	20	24	1	15	16	30
32	15	21	25	1	16	17	32
34 ♦	16	22	26	1	17	18	34
36	17	23	27	1	18	19	36
38	18	24	28	1	19	20	38
40	19	25	29	1	20	21	40
42	20	26	30	1	21	22	42
44	21	27	31	1	22	23	44
46	22	28	32	1	23	24	46
48	23	29	33	1	24	25	48
50 ♦	24	30	34	1	25	26	50

This document and drawings, sketches, and schematic drawings are the property of the NICOMATIC company, and no parts thereof may be reproduced and used without the written consent of the owner. Law dated 11.03.1902

Catalogue Reference :

A222YnnR

Compliant matrix :  
Customer reference :



General tolerance ±0.2  
Scale 3:1  
Page 1/1