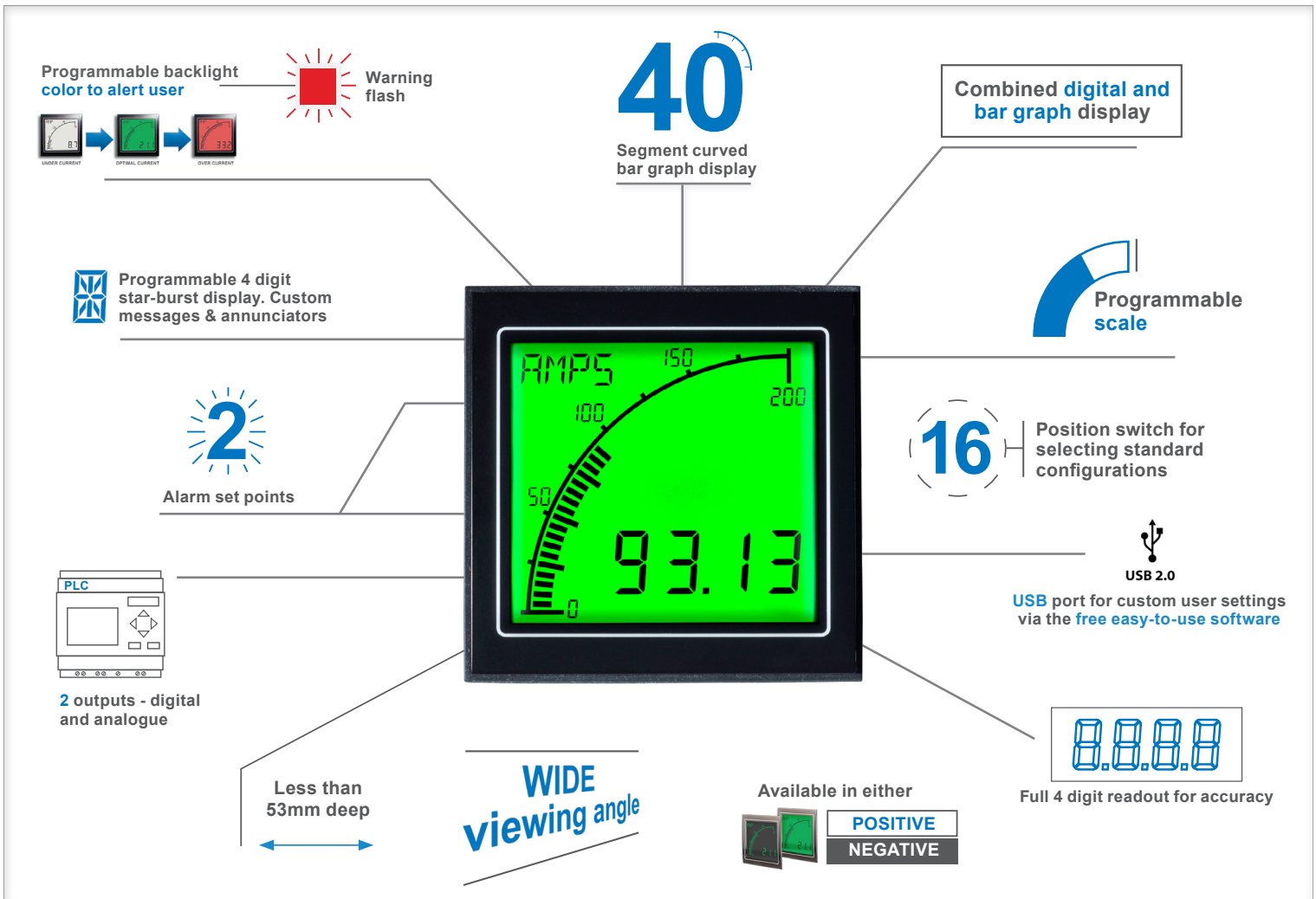




# The Advanced Panel Meter

## APM Range

**MODELS:** Volt Meter, Ammeter, Frequency Meter



The most visible, easy to use, programmable panel meter on the market. The APM provides accurate measurement with an immediate visual indication of critical parameters. It has been designed for engineers who require a more effective way of monitoring and displaying data.

The unique display combines traditional moving coil meters with the latest digital panel meters and it features a multitude of options that can be set using the APM software. The backlight can be programmed to change color to alert the operator when the current or voltage supply is too high or too low, reducing the risk of equipment failing and improving efficiency.

## Key Features

### Large multi-format display that incorporates:

- 40 segment bar graph display
- Large 4 digit display
- Separate Starburst display area for annunciators, custom messages and alarm information
- Dynamic backlight colour

### Programmable:

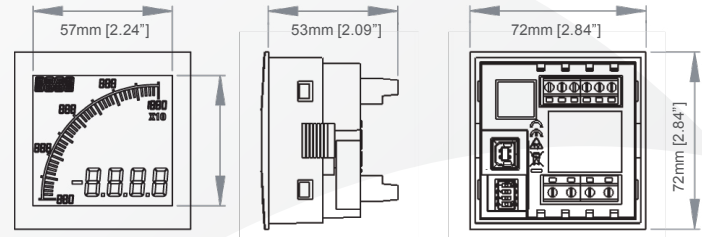
- Scale (offset and gain) and Range (min and max)
- Custom annunciators
- User selectable backlight color and intensity
- Two independent alarm set-points
- Two independent outputs (output models only)
- 4-20mA analogue monitor output (output models only)

MEASUREMENT	VOLT	AMP	FREQUENCY
Input range (DC)	0 - 600V	0 - 5A	-
Max Using Shunt		1,000A	
Input range (AC)	0 - 600V	0 - 5A	2 - 400Hz
Max Using CT		10,000A	
Accuracy	1%	1%	0.5%
Display modes		Peak or RMS	
<b>ENVIRONMENTAL</b>			
Temperature - operating		-10 to +60°C	
Temperature - storage		-40 to +70°C	
IP rating (from the front)		NEMA 4X & 12 with IP65	
<b>POWER SUPPLY</b>			
Nominal Input (AC or DC)		12-24 VAC/VDC	
<b>DISPLAY</b>			
Number of digits		4	
Digit height		12mm [0.47"]	
Digit height of annunciator		6mm [0.23"]	
Number of message characters		4	
Backlight colours		Red, Green, White	
LCD display		Positive or Negative	
<b>OUTPUT MODELS</b>			
Max voltage		34V	
Max current		500mA	
Analogue output		4-20mA	
<b>CERTIFICATION</b>			
		UL and cUL, CE	

### Visibility:

- User adjustable backlight brightness and colour
- Large display
- Wide viewing angle (both horizontal and vertical)
- Custom annunciators

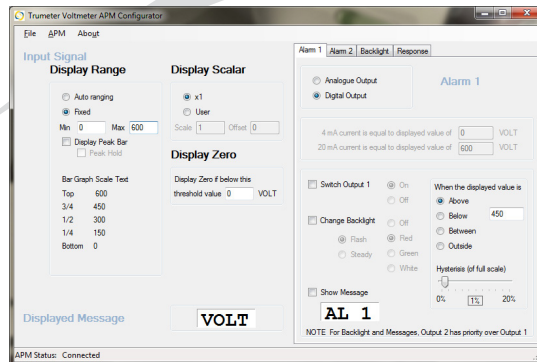
### Dimensions:



Panel cutout: 68mm x 68mm [2.68" x 2.68"] as per DIN43700/IEC61554

## Easy To Use Software

Just plug into any USB port on your PC, run the freely available APM Configurator application and you're off. No drivers required.



### Part Numbers: (POS LCD = Positive LCD; NEG LCD = Negative LCD)

Volt	Description	Amp	Description	Frequency	Description
APM-VOLT-APN	APM VOLT METER, POS LCD	APM-AMP-APN	APM AMMETER, POS LCD	APM-FREQ-APN	APM FREQ METER, POS LCD
APM-VOLT-APO	APM VOLT METER, POS LCD WITH OUTPUTS	APM-AMP-APO	APM AMMETER, POS LCD WITH OUTPUTS	APM-FREQ-APO	APM FREQ METER, POS LCD WITH OUTPUTS
APM-VOLT-ANN	APM VOLT METER, NEG LCD	APM-AMP-ANN	APM AMMETER, NEG LCD	APM-FREQ-ANN	APM FREQ METER, NEG LCD
APM-VOLT-ANO	APM VOLT METER, NEG LCD WITH OUTPUTS	APM-AMP-ANO	APM AMMETER, NEG LCD WITH OUTPUTS	APM-FREQ-ANO	APM FREQ METER, NEG LCD WITH OUTPUTS
022128-01	USB Cable				
<b>By Request: Modbus connectivity</b>					
APM-VOLT-APS	APM VOLT METER, POS LCD WITH MODBUS	APM-AMP-APS	APM AMMETER, POS LCD WITH MODBUS	APM-FREQ-APS	APM FREQ METER, POS LCD WITH MODBUS
APM-VOLT-ANS	APM VOLT METER, NEG LCD WITH MODBUS	APM-AMP-ANS	APM AMMETER, NEG LCD WITH MODBUS	APM-FREQ-ANS	APM FREQ METER, NEG LCD WITH MODBUS

Full specifications available online [www.trumeter.com/apm](http://www.trumeter.com/apm)

