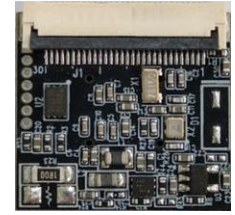
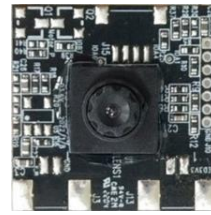
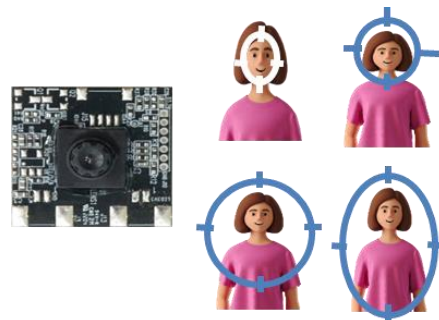


The module incorporate four different body part features, detecting and tracking of human face、head、head-and-shoulder and upper body. For example, in order to follow human behavior, this module is applied to the smart gimbal to track human continually.



- Detect and track human face、head、head-and-shoulder and upper body
- Real-time edge decision-making without network connection



Application

- Smart gimbal
- Automatic tracking online meeting camera
- Distance learning

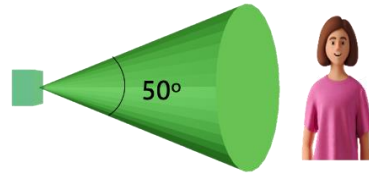
Ratings / Specifications

Ratings

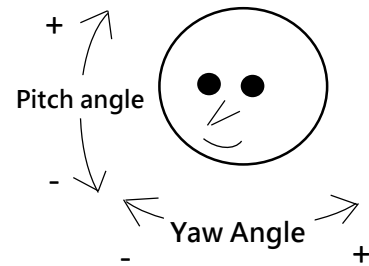
Item	Rated values
Supply voltage	3.3 VDC 5.0 VDC (Option)
Consumption current	<0.21 A
Operating temperature	0 to +50°C
Storage temperature	-30 to +70 °C

Specifications

	Angle
Horizontal detection range (angle of view)	50°
Vertical detection range (angle of view)	50°



Angle Range	Pitch angle (up-down)	Yaw angle (left-right)
Face detection	±40°	±40°
Head detection	±30°	±90°
Head and shoulder detection	±30°	±30°
Upper body detection	±30°	±70°

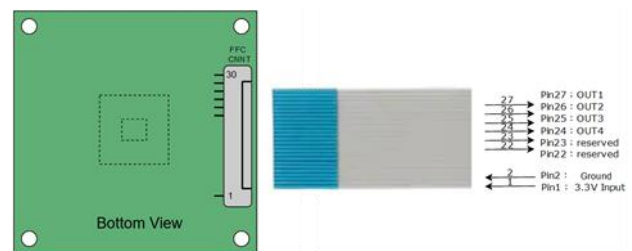


Host Communication Specifications	Specifications
Standard	GPIO

Detection Distance	Distance
Face detection	35-60 CM
Head detection	50-130 CM
Head and shoulder detection	80-200 CM
Upper body detection	80-250 CM

Connector Pin Assignment

Pin No.	Pin Name	Human Tracking
Pin1	3.3V	Power Supply
Pin2	Ground	Ground
Pin22	Reserved	-
Pin23	Reserved	Head detection
Pin24	Out4	Face detection
Pin25	Out3	
Pin26	Out2	Head and shoulder
Pin27	Out1	Upper body



Note. Output level High (3.3V) active.

Alternative Power Supply Input (Option)

Pin No.	Pin Name	Human Tracking
Pin1	5V	Power Supply
Pin4	Ground	Ground

