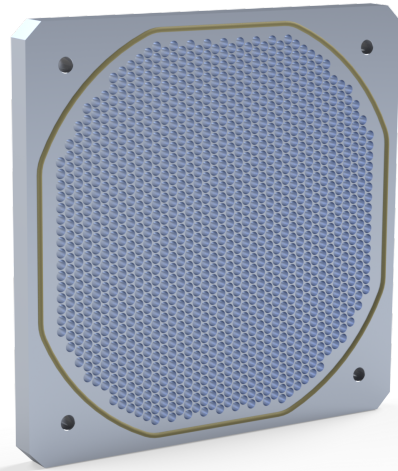


RI 4902

EMI ventilation panel

120 mm fan

105 dB shielding
efficiency up to 9 GHz



OVERVIEW

The RI 4901 EMI ventilation panel is designed to be used in the most demanding shielding applications. Up to 9 GHz the shielding efficiency is 105 dB. The panel is designed to fit 130x130 mm standard computer fans.

FEATURES

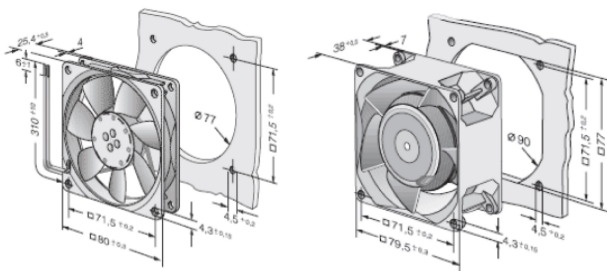
- 105 dB shielding up to 9 GHz
- Fit standard fans, 130x130 mm
- Easy to mount

APPLICATION

The Ranatec EMI ventilation panel is typically mounted on shielded boxes or shielded rooms in combination with a ventilation fan. The ventilation panel enables excellent ventilation of your shielded box, but still keeping superior RF/EMI shielding.

SPECIFICATION

| | |
|------------------------|--------------|
| Shielding, up to 9 GHz | 105 dB |
| Shielding, 20 GHz | 90 dB |
| Shielding, 40 GHz | 70 dB |
| Dimensions (WxLxT) | 130x130x9 mm |
| Mass | 0.22 kg |
| Material | Aluminium |



ORDERING

RI 4901

EMI ventilation panel