



LED EFL-130F-MD



Integrated Outdoor LED Wall Lantern W/ Oil Rubbed Bronze
Aluminum Die Cast & Frosted Glass Lens

Product Description

A step above simple outdoor lighting, the Euri Lighting Flame Bulb Fixture decorates, illuminates and protects. Note-worthy and inventive, the LED-integrated outdoor lantern is designed with dusk to dawn technology, motion sensor detection and an enclosed flame bulb programmed with over 300 LEDs. At sun set, the enclosed flame bulb turns on flicker motion, then when motion is detected, the fixture turns to full brightness. Aside from ensuring safety and security, the decorative lantern offers an aesthetic appeal with frosted glass, oil-rubbed bronze finish, and a swopping S-hook arm.



Estimated Energy Cost: \$1.50 per year

*Note: Design, features and specifications subject to change without notice. Some features may not be available on all models. For more information please visit: www.eurilighting.com or call 1-888-743-5766



Integrated LED Fixture

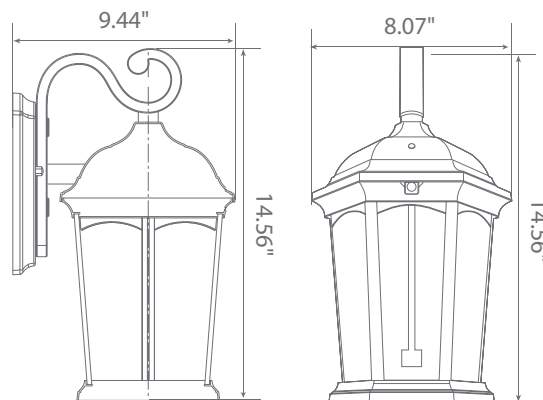
Specifications

Input Power	Input Voltage	Lumen Output	Beam Angle	Center Beam	CCT
12.5 W	120 V	1200 lm	110°	N/A	3000 K
CRI	Luminous Efficacy	Power Factor	Input Current	Base/Cap	Lamp Lifespan
80	96 lm/W	0.7	0.1 A	E12	50,000 Hrs.

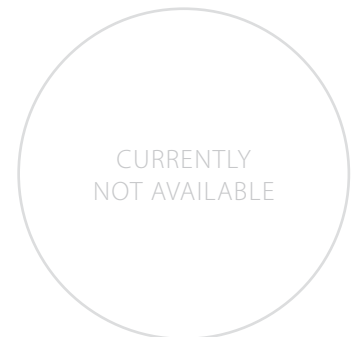
Product Features

- Motion Sensor
- Dusk To Dawn
- Wet Rated
- Flame Bulb Included

Product Dimensions



Product Photometric Data



Euri Lighting | A Division of IRTRONIX Inc.

20900 Normandie Avenue Suite B Torrance, CA 90502 | Tel: 310.787.1100 | Fax: 310.787.1166 | www.eurilighting.com
©2019 Euri Lighting. All Rights Reserved