

TTS EM/EM-LP

High definition, world-language, best-in-class Text to Speech module

Human sounding speech synthesis in with a serial interface. Seamless integration, simple operation.

Real-time voice announcements generated directly to speakers from text in RS-232 serial data

- Complete industrial interface produces realistic voices directly from ASCII text.
- Integrated single endpoint speaker amplifier • Line out for external audio systems.
- Over 20 international languages and voices supported.
- TTS-EM @ 5 Volt Operation • TTS-EM-LP @ 3.3 volt, Low Power with Sleep

The TTS-EM offers a complete Text to Speech platform with a integrated speaker amplifier. Typical deployments include signage to speech conversion, paging support and OEM industrial products. RS-232 connectivity offers simple setup, management and control using TX/RX serial streams. Text to Speech generation includes support for dictionary management, in-line control codes and dynamic language and voice switching

- Text to Speech supports up to 9 concurrent TTS languages or gender voices. Choose from 26 voices.
- Integrated amplifier supports single speakers and direct drive for paging system amplifiers
- Highly integrated OS provides superior flexibility and support remote for upgrade capability
- Supports seamless switching from TTS to/from user stored pre-recorded audio files
- Integrated command and control language, provides complete user control from remote locations
- Power management includes low power standby and sleep modes of 15mw @ 3.3v with TTS-EM-LP version
- Optional external microphone sensing for ambient noise detection and automatic volume adjustment
- Flash based audio file transfer and dictionary management for phonetic adjustments
- Integrated commands support inline control of volume and multi-lingual language selection, on-the-fly
- Simple integration into EXISTING products. No special programming required

Arabic Chinese Czech Danish Dutch English (UK) English (US) Finnish French (F) (B) (C) German Greek Japanese Korean Italian Norwegian Polish Turkish Portuguese Russian Spanish (NA) (C) Swedish ...more

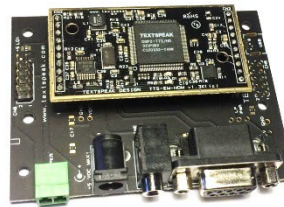
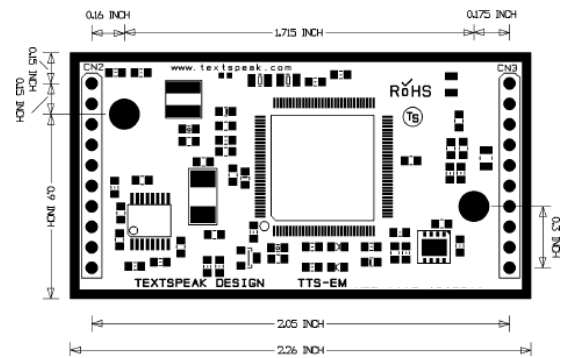
- Alarm & Security • Health Care • Signage to Audio • Machine Interfaces • Mass Notification • Industrial Status
• Transit Systems • Assistive Speech • ADA Compliance

TextSpeak

SPECIFICATIONS

Core Technology earBridge® and TextSpeak 3rd Generation TTS
High Definition Languages supported: Arabic Chinese Czech Danish Dutch English (UK) English (US) Finnish French (F) (B) (C) German Greek Japanese Korean Italian Norwegian Polish Turkish Portuguese Russian Spanish (NA) (C) Swedish
(Contact us for latest list)
Control Interface Serial RS-232 & Non-Inverting TTL UART
Serial Baud rates 115.2K – 9600 bps
TTL UART Serial Interface 3.3v non-inverting for uP connections
Prerecorded file support Protocol 16bit PCM/uLaw
Speaker Out .2 watt /8ohm @5v or +4dbm 600ohm floated/balanced
Line Out –10dbm Typical 1v p/p
Manual Volume Adjustment 10 steps 4db/step
Power Nominal (No Speaker load) 5V @ 350mw idle
Power Suspend (Mode EM-LP version) 15mw @ 3,3 v
Power (8 ohm speaker at max volume) 2 watts
Remote Diagnostics Reporting via Serial
Remote Programming Flash programmable RS-232
Fault Management Short circuit speaker recovery fault detection
Connector I/O Qty 2 - 1x10 Pin .100" connector pins
Temperature -30~70 C (Operating), -40 C~85 C (Storage)
Size (Module only) 57 mm x30mm x 14mm **Weight** 15 g (.5 oz)

DIMENSIONS



TTS-EM-HD2

ORDER INFORMATION

TTS-EM 5.0v Version
TTS-EP-LP 3.3v Low Power

Also Available:

TTS-EM-HD2 EM module with carrier board with serial and audio I/O connections

Command and Control

Operation and Sample Control Code

Basic TTS generation is SIMPLEJust send ASCII data and terminate with ENTER <CR> to generate speech. Additional inline control codes manage advanced operation (such as mixing TTS with pre-recorded wav or mp3) as well as buffer management. For basic operation, send text and add "Enter" <CR> to talk.

Hello I can talk! <CR> and change volume, and languages on the fly! <CR>

This sample text demonstrates both spoken and non-spoken data with pre-recorded audio files. (tone1.wav and tone2.wav are factory recorded files).

ESC p"tone1.wav" Express 32, arriving in 2 minutes on track 12, for all points South. **DLE EM** This text is in-line data that is not spoken by the TTS processor **DLE RS** Please expect delays **ESC p**"tone2.wav". End of test. **CR**

Refer to the ENC1 User Guide for a comprehensive list of inline codes to switch voices dynamically, control modes and modify dictionary for pronunciation changes.

(C) 2010-2021 TextSpeak Corp. All Rights Reserved

24 Voices available Select a voice
 Currently Selected: "Antoine" French

HELP:

A	Adaptive Level Set	Adaptive Level Control (ALC),
B	Boot TTS	Enter the text to be spoken at power-up
D	Display Files	Show listing of files and memory in folder
E	ignore ESC	Ignore ESC commands in the TTS stream
F	Flash Drive	Enable USB access to manage Flash memory
I	Information	Get current settings information
P#	Play Audio	Generate test tones (1=1khz,2=sweep,3=noise)
Q#	Quiet Mode	'Q?' for options
S	Change Serial	115200,n,8,1
T	TTS Mode	Go from CMD mode to TTS mode
U	Update	Update Firmware
V#	Select Voice	Select a voice (24 available)
?	Review	Review current settings and information

TEXTSPEAK EULA Text to Speech End User License Restrictions

The end user is licensed to use the TTS-EM for speech generation for real-time Text to Speech conversation and playback in a public place. The end user may not use the TTS-EM to record and/or save audio in stored files to be used to playback or broadcast in any public place.

TEXTSPEAK PRODUCT FAMILY

Ethernet, WiFi, Cellular, Serial



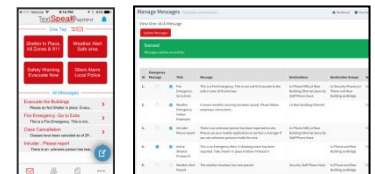
Modules for OEM



Flexible Add-Ins



Mobile and Cloud Applications



This document may contain advance information. Contact TextSpeak factory for technical specification before product design and/or use. Design and specifications are subject to change without notice. TextSpeak' product designs are packaged by leading manufacturers around the world. earBridge® is a registered trademark. © 2014-2021 TextSpeak Corporation See www.textspeak.com/patents for patent and patents pending. (EM/LP-DS-1.4)